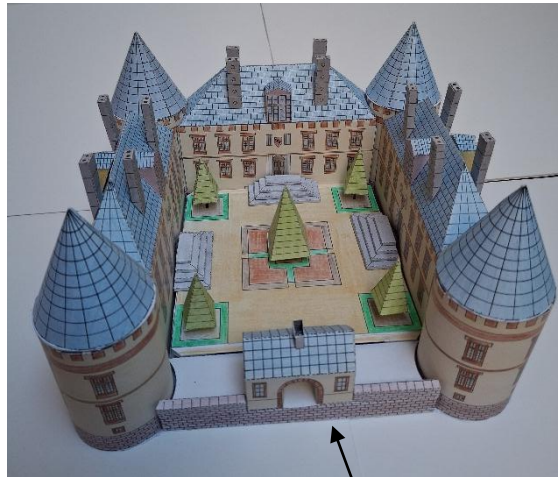
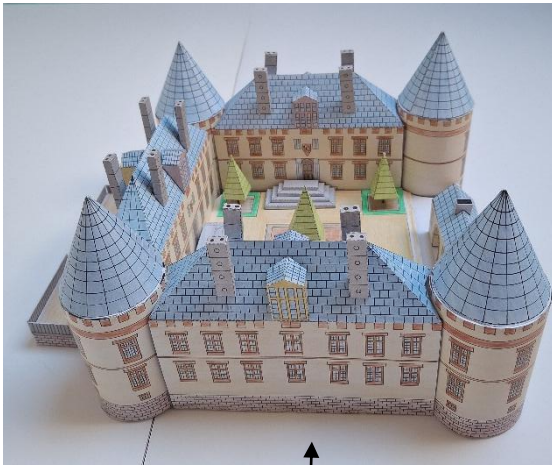


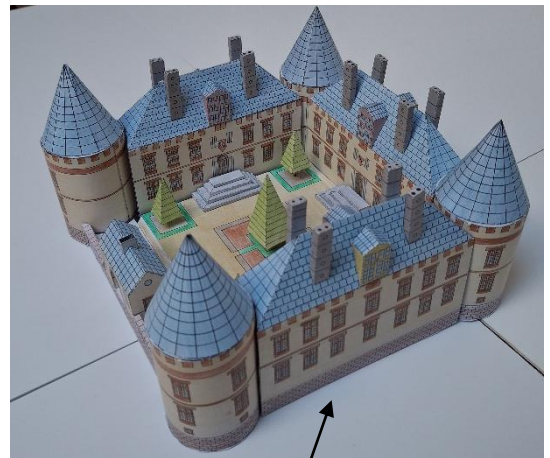
LA CONSTRUCTION DU CHÂTEAU



Façade nord : entrée du château



Façade ouest



Façade est



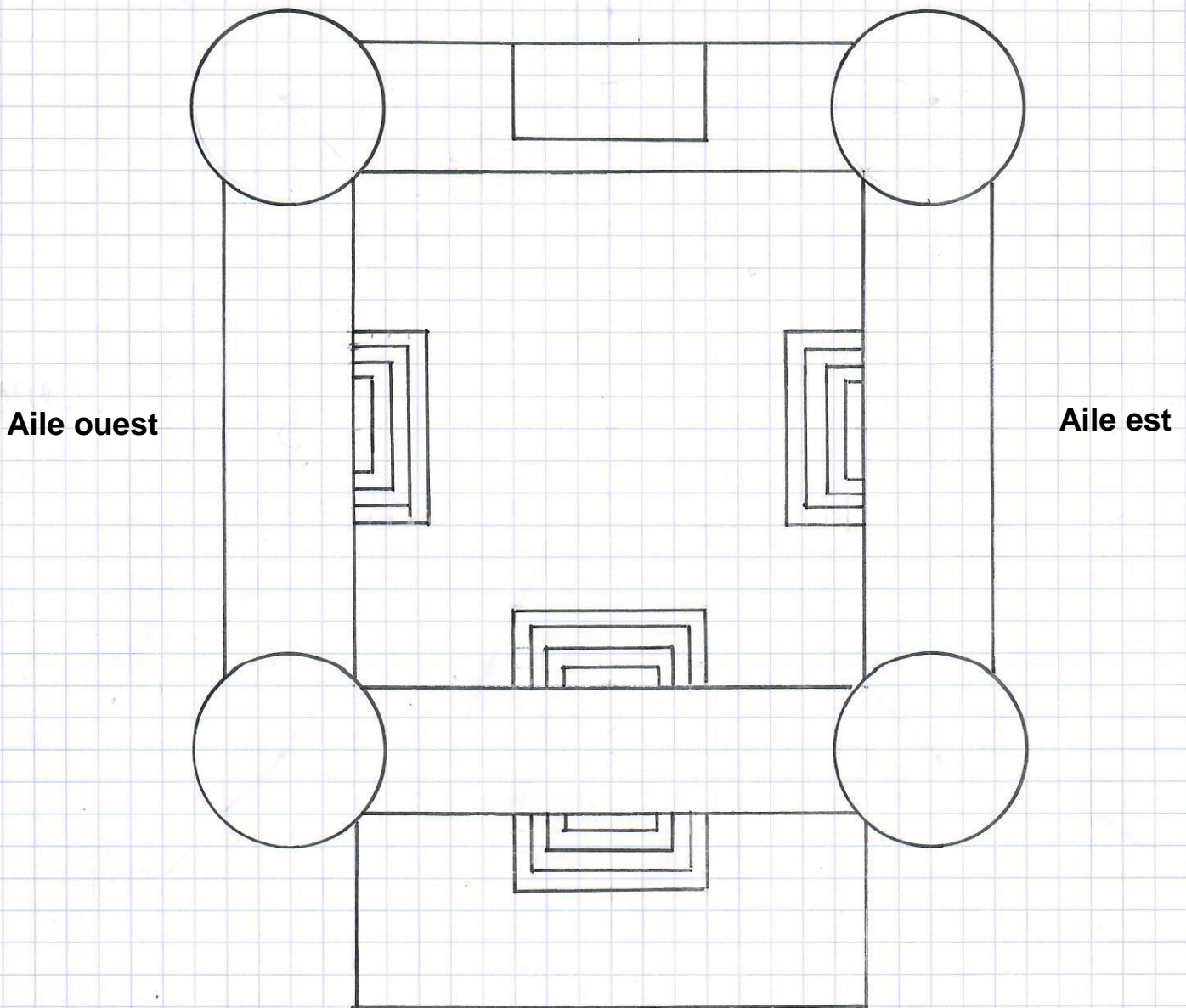
Façade sud : terrasse et accès aux jardins

L'assemblage des tours rondes avec les ailes du château est délicat. Nous conseillons d'assembler les tours et les ailes au moyen de papier adhésif.

LE CORPS DU CHÂTEAU autour d'une cour centrale se compose de l'entrée au nord, 4 tours, 2 ailes identiques à l'est et à l'ouest et d'une 3^{ème} aile pourvue d'une porte de sortie vers la terrasse au sud.

Échelle 1/2

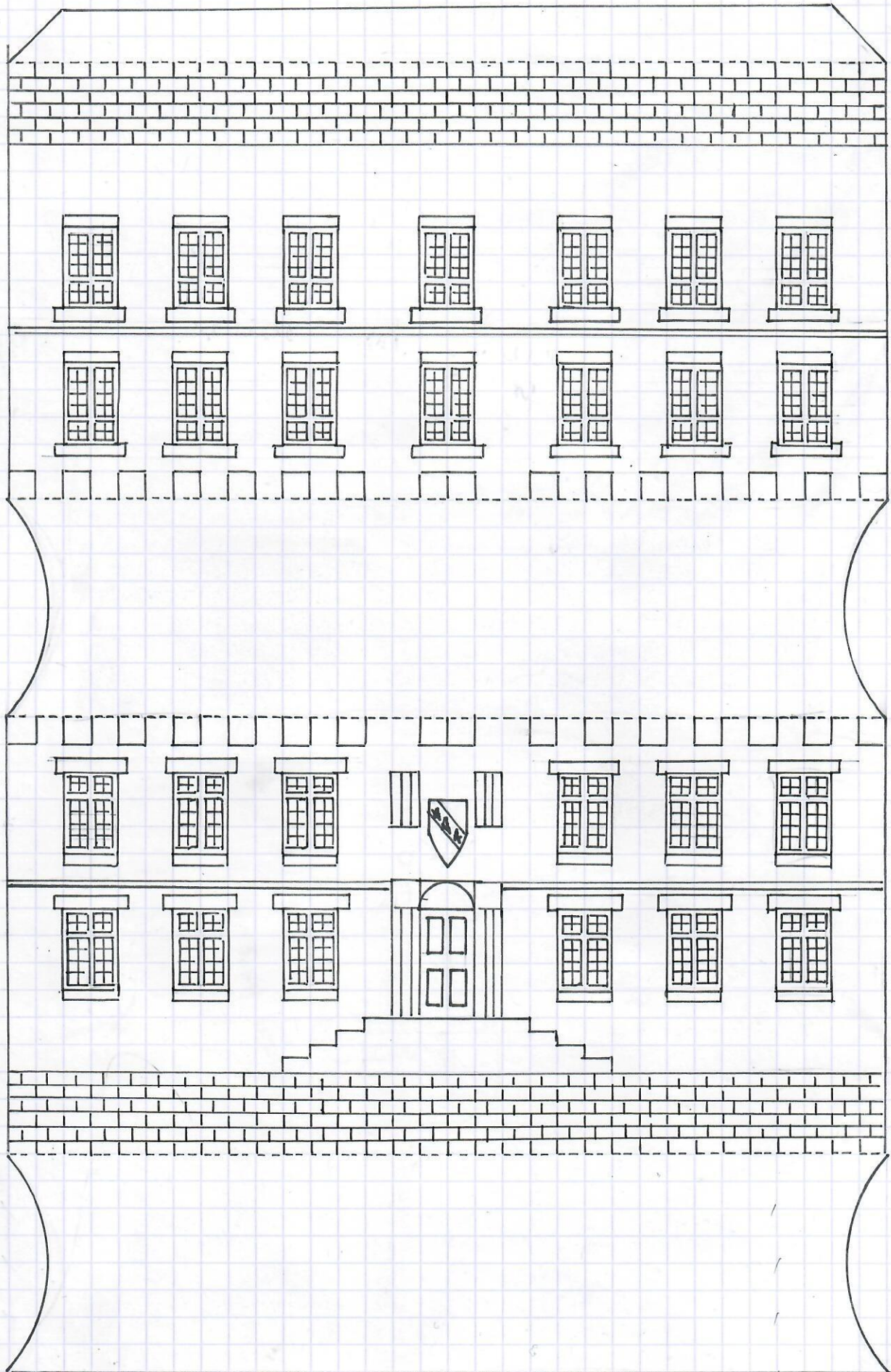
Entrée nord

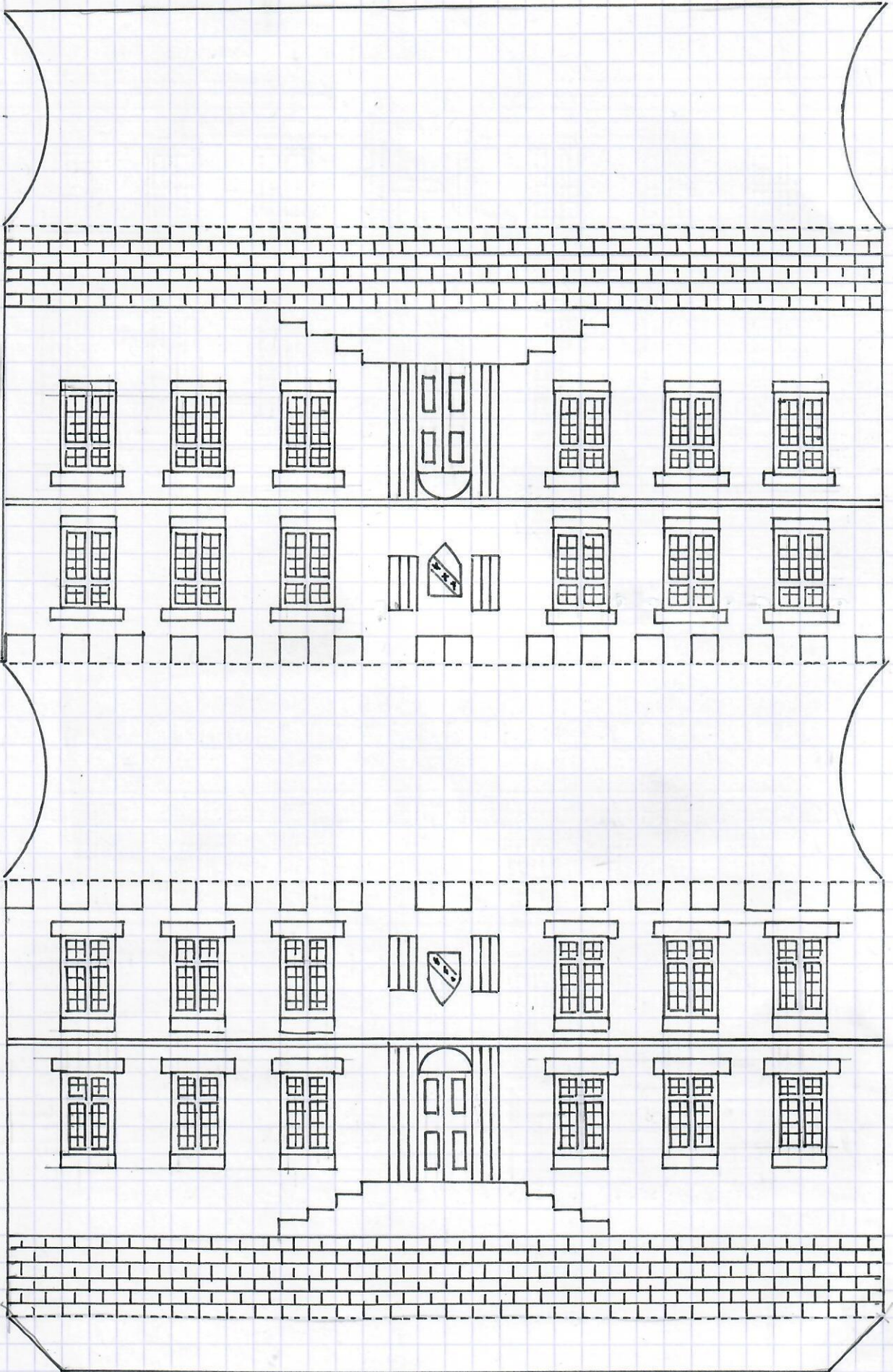


Aile sud et terrasse

CORPS DES AILES OUEST ET EST

IMPRIMER 1 FOIS
Papier 160 g

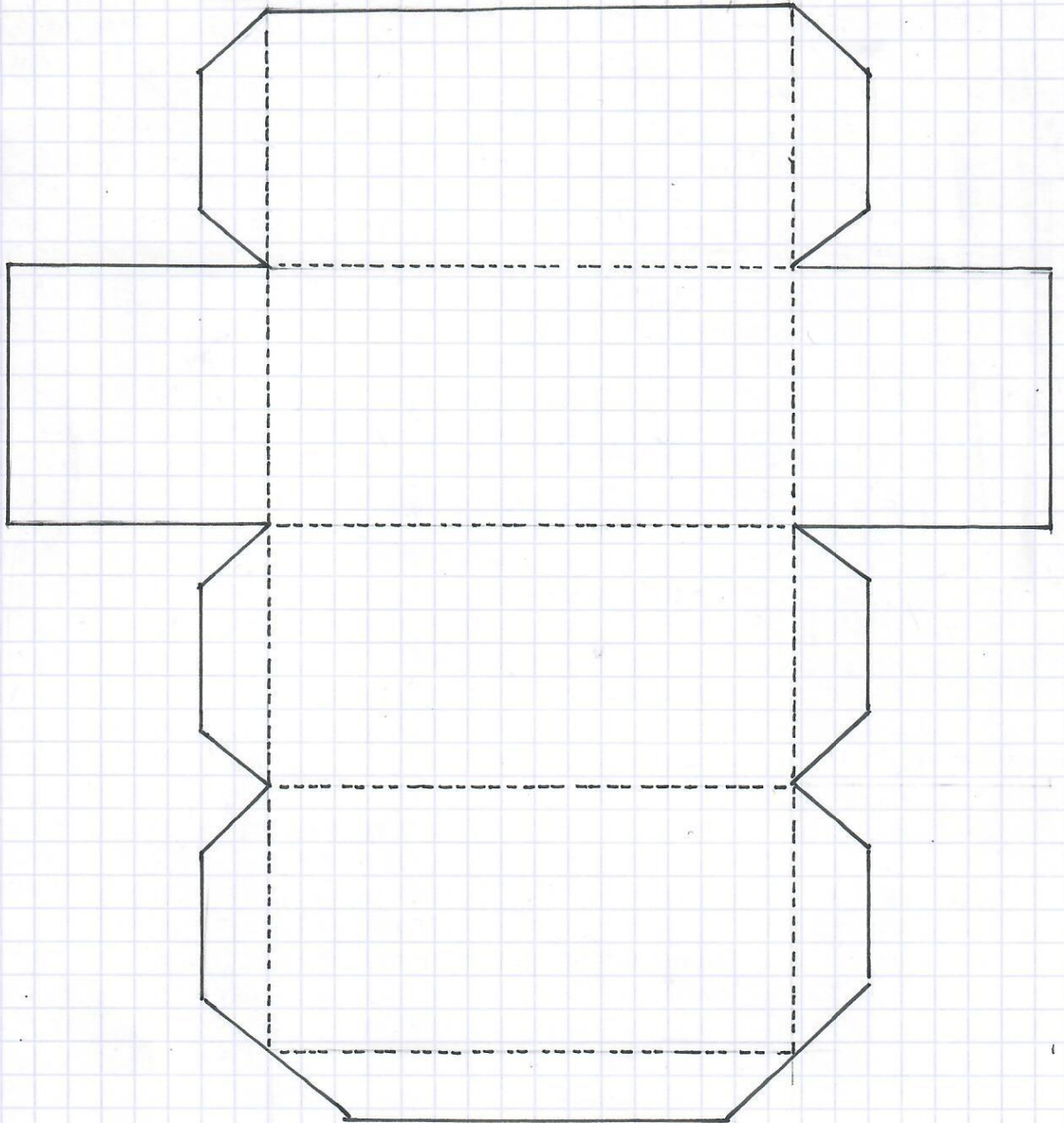


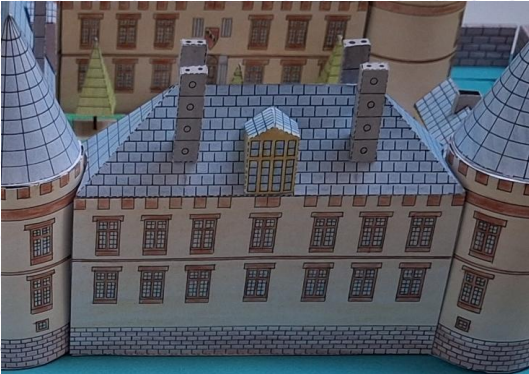
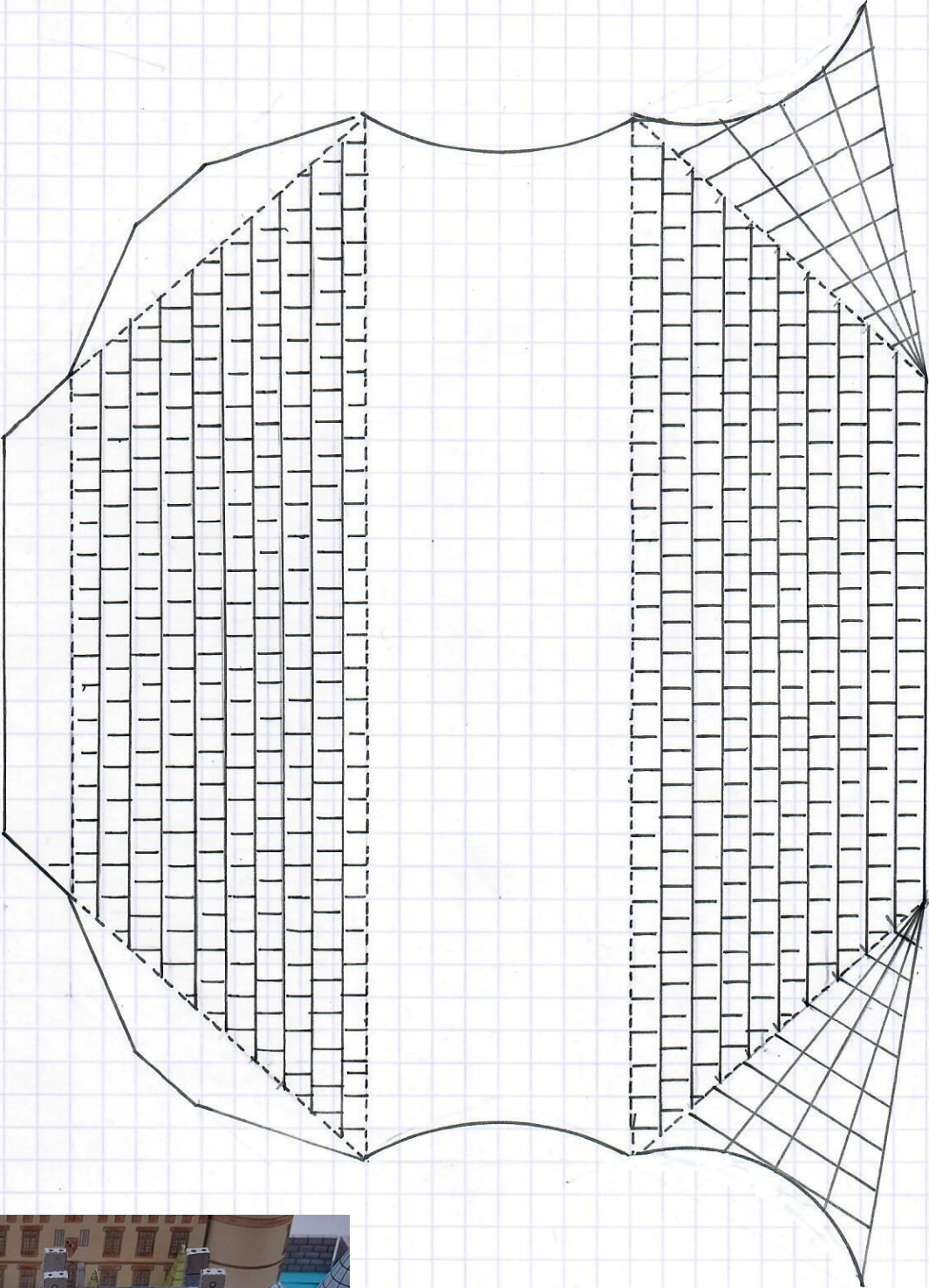


Chambre

RENFORTS à glisser à l'intérieur des volumes précédents (2 renforts par aile)

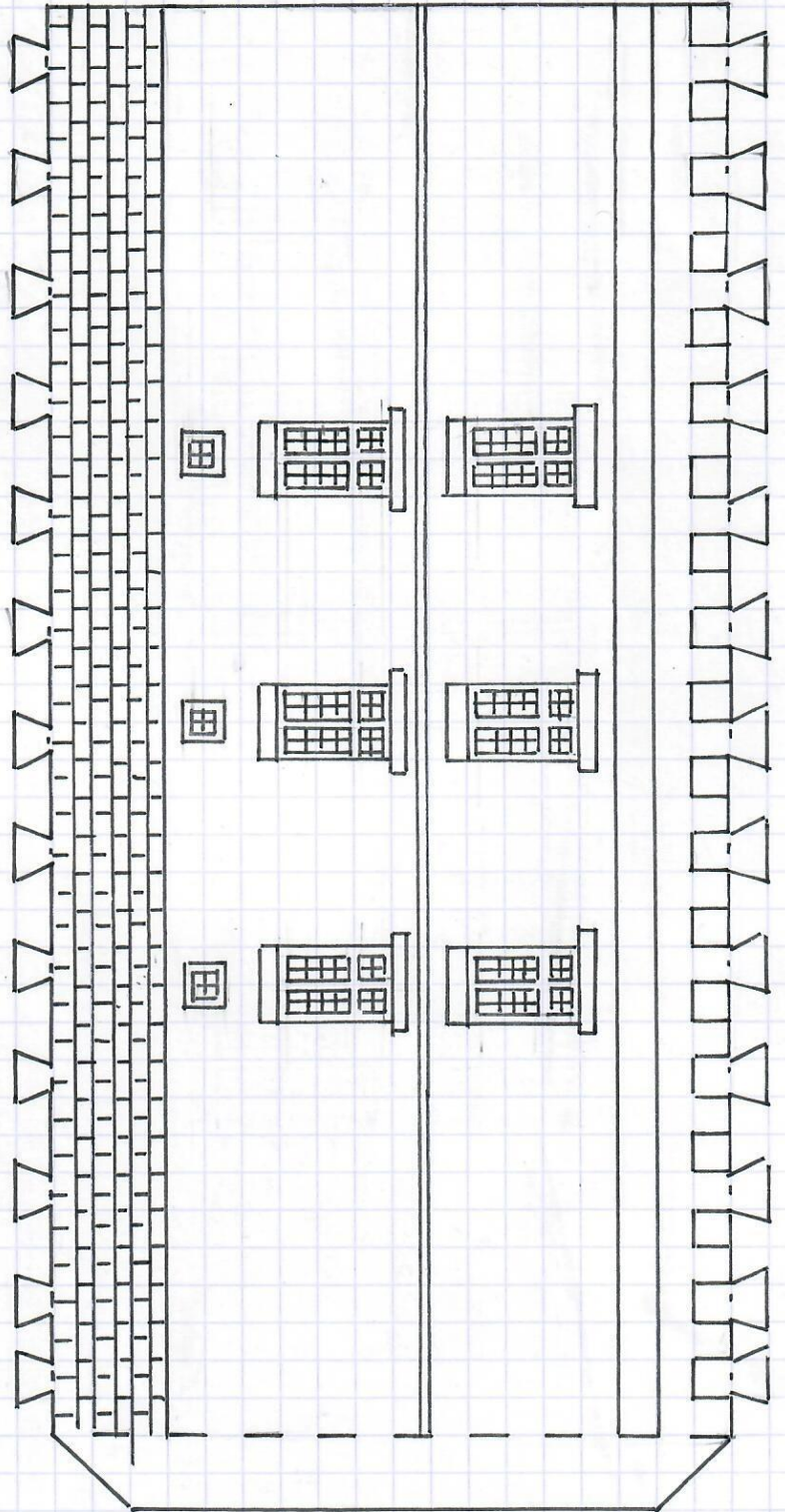
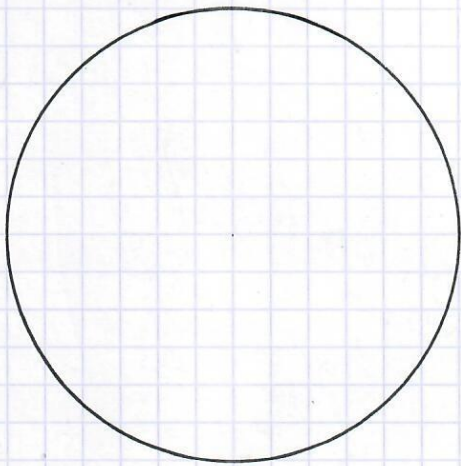
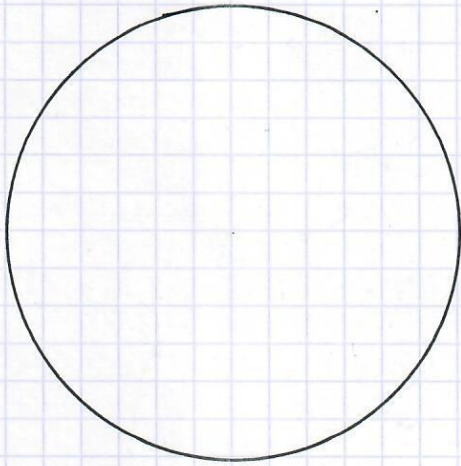
IMPRIMER 6 FOIS
Papier 160 g





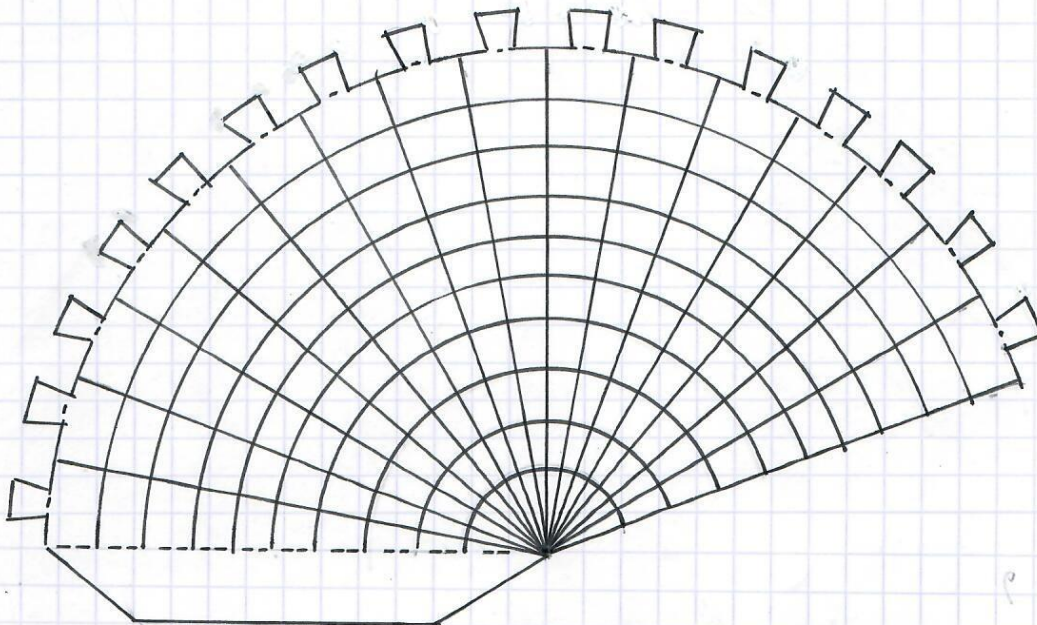
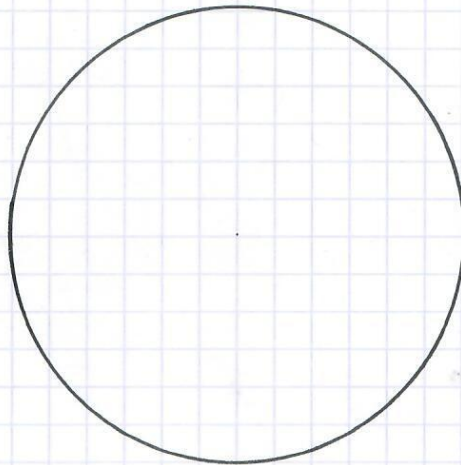
TOUR

Photocopier 4 fois sur papier bristol uni.



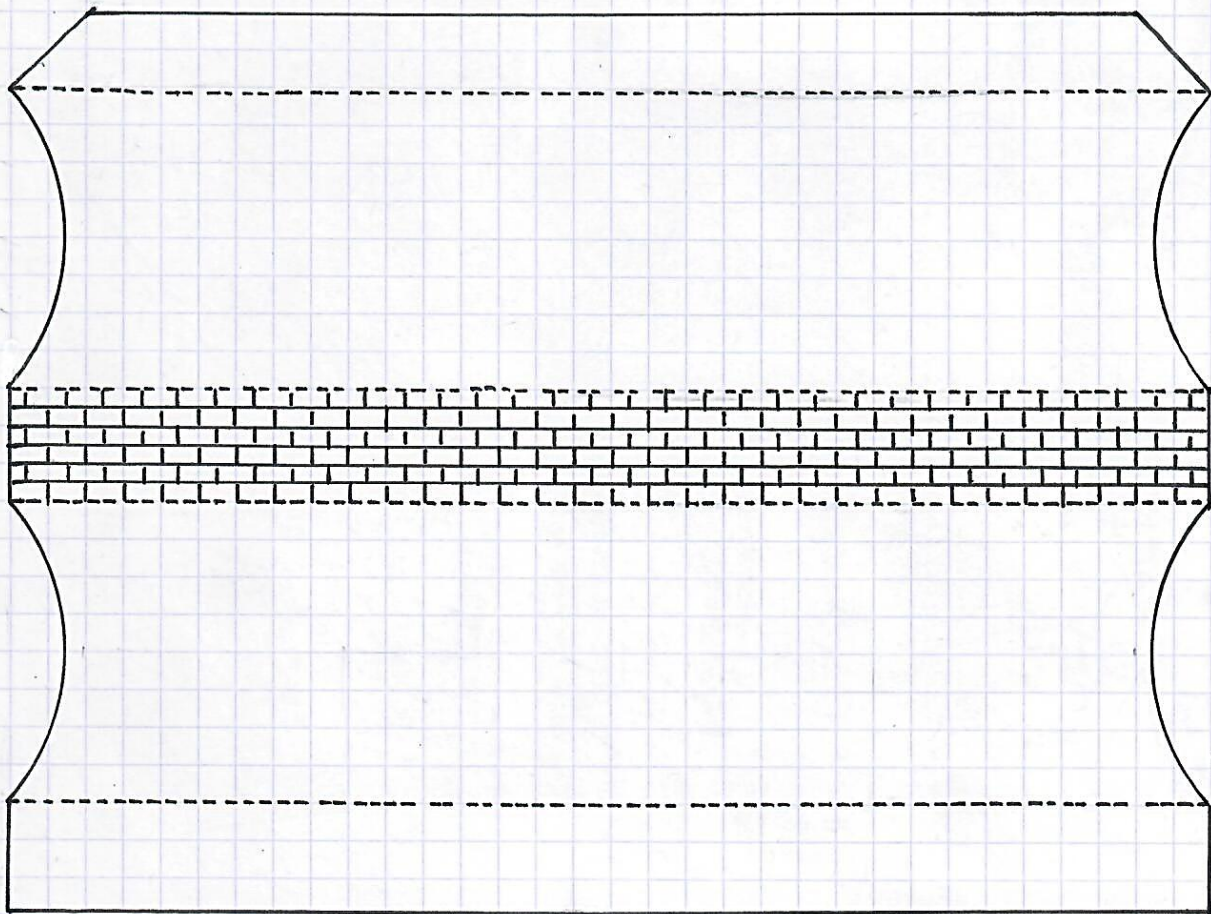
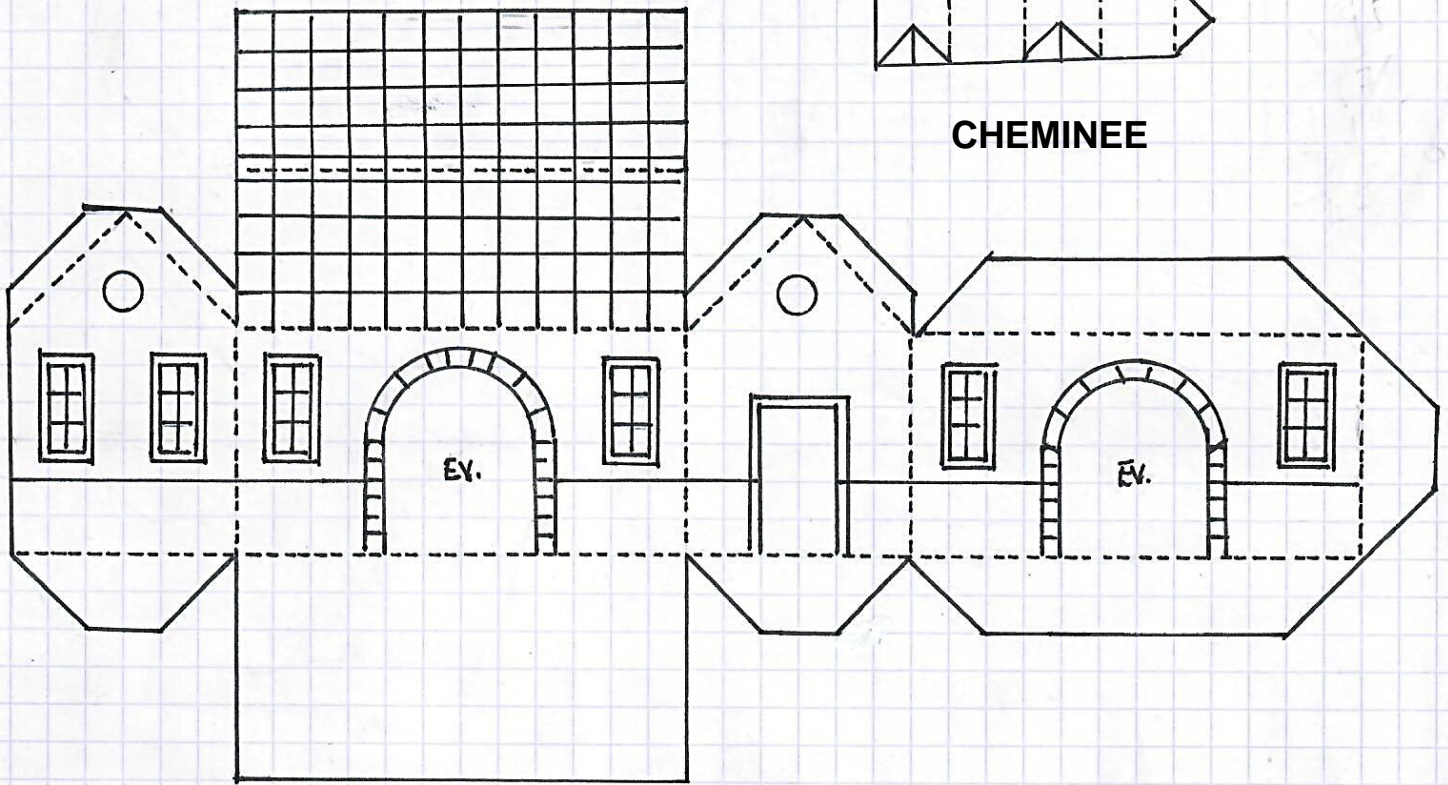
TOIT EN FORME DE CÔNE POUR LES TOURS

IMPRIMER 4 FOIS
Papier 160 g





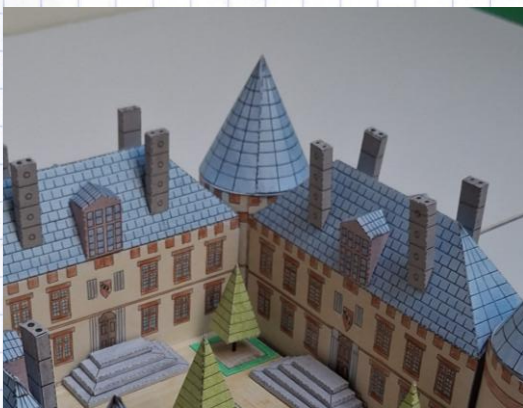
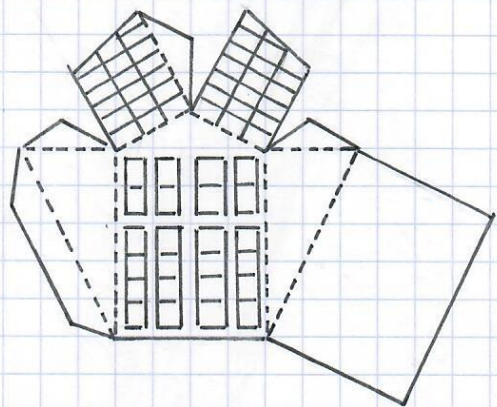
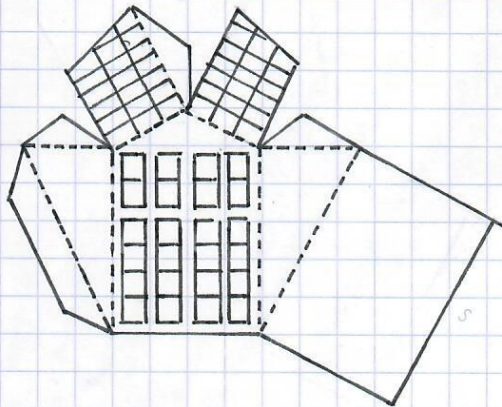
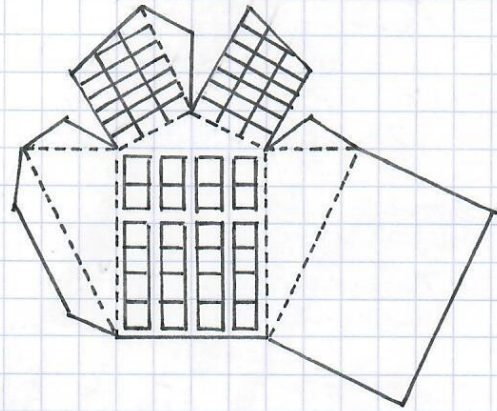
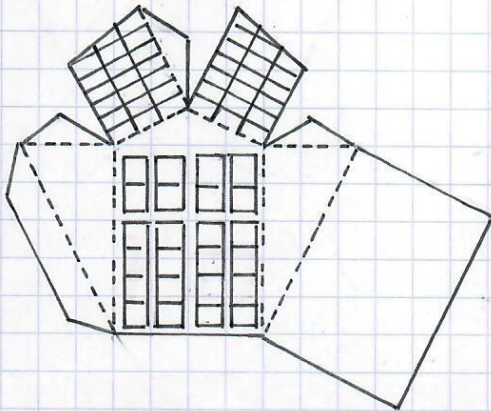
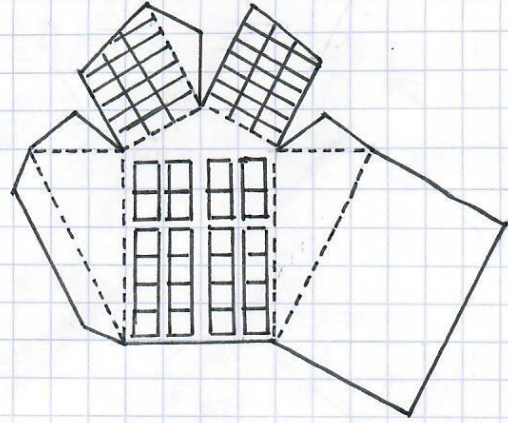
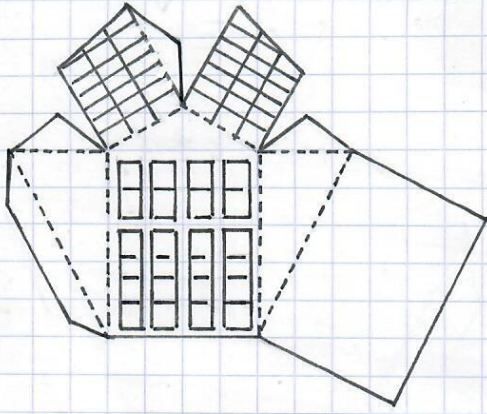
CHEMINEE



BASE DE L'ENTREE

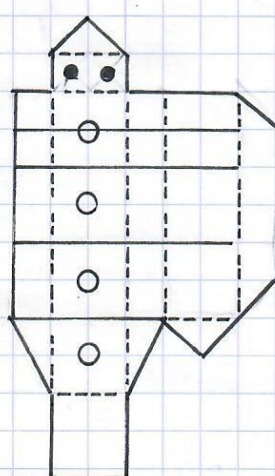
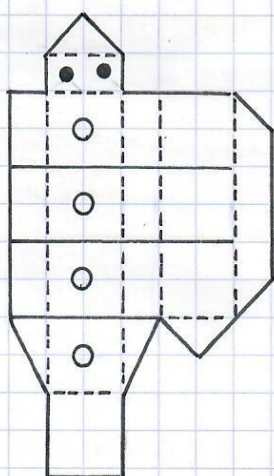
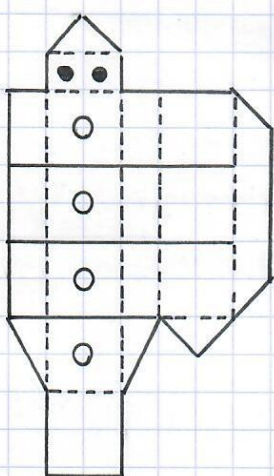
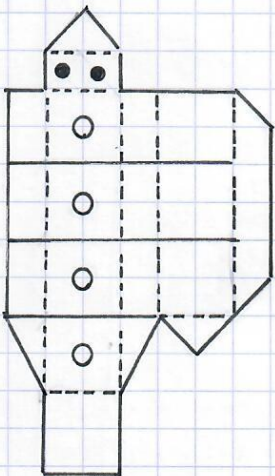
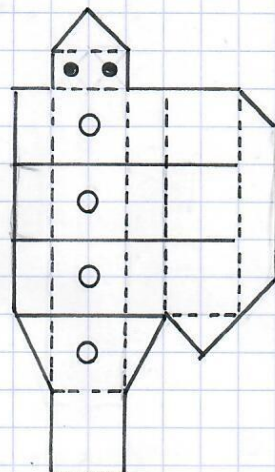
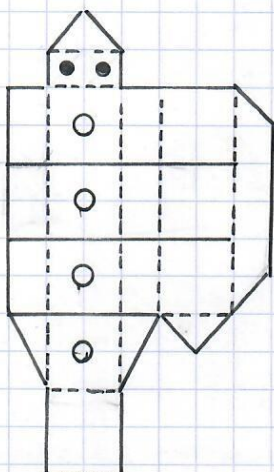
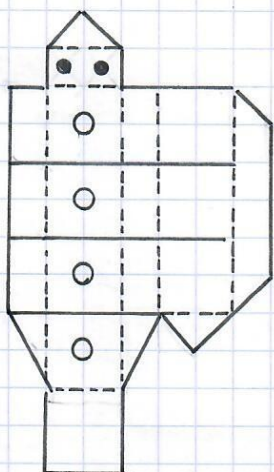
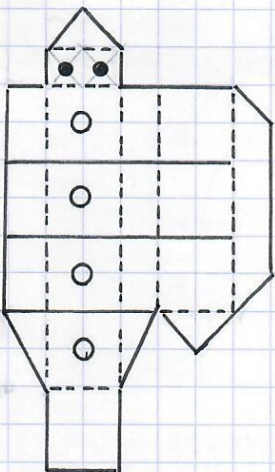
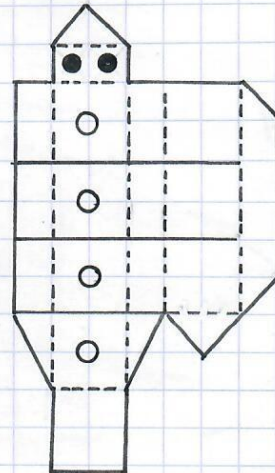
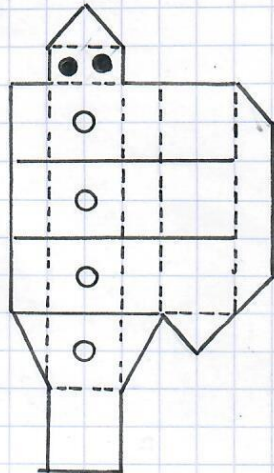
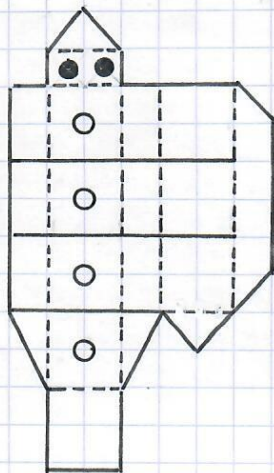
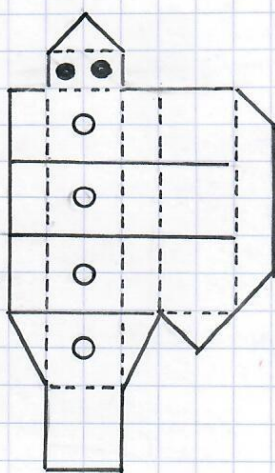
LES 6 MANSARDES

IMPRIMER 1 FOIS
Papier 160 g



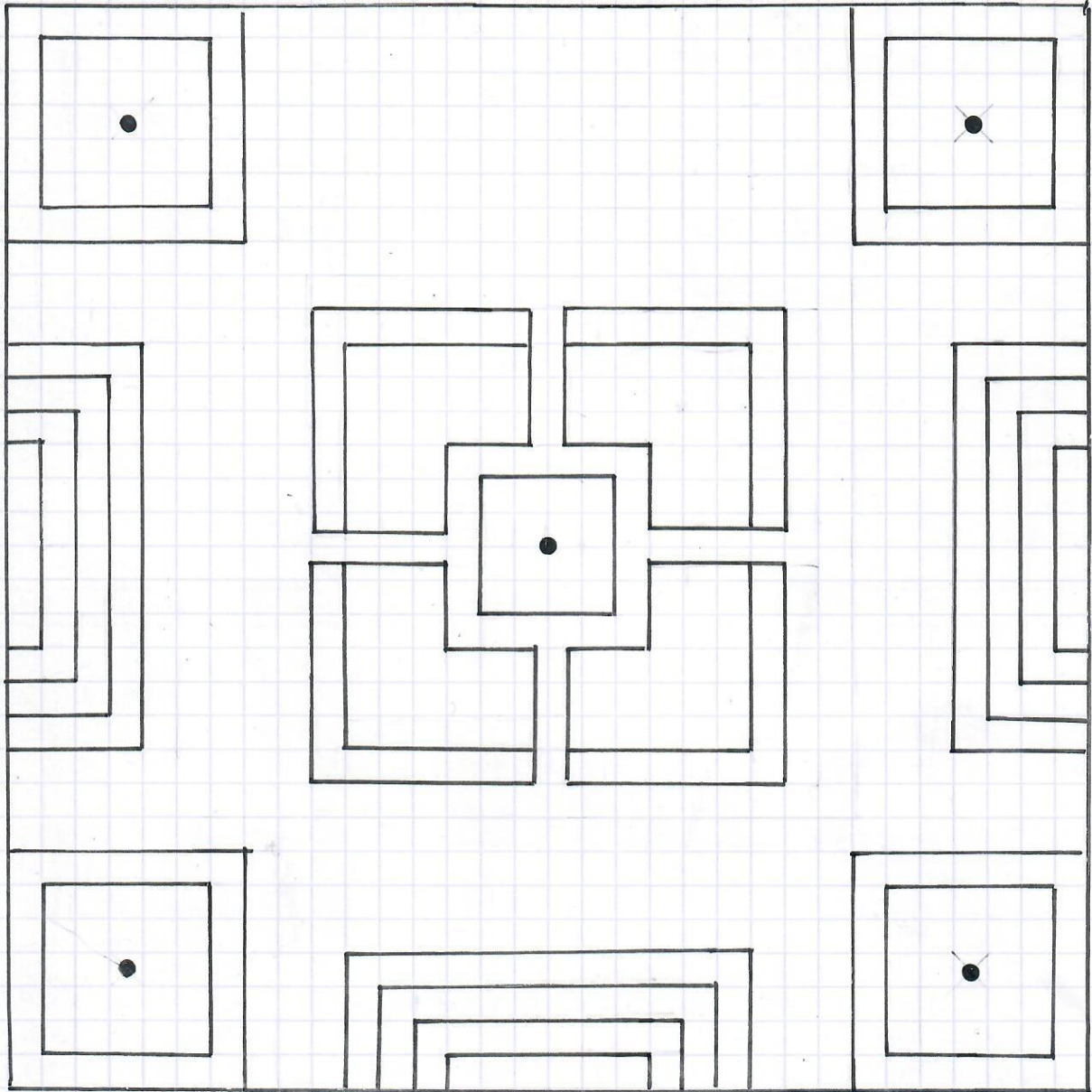
LES 12 CHEMINEES

IMPRIMER 1 FOIS
Papier 160 g

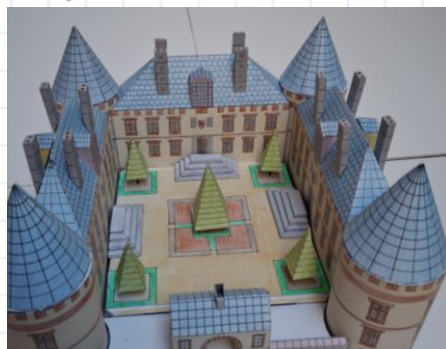


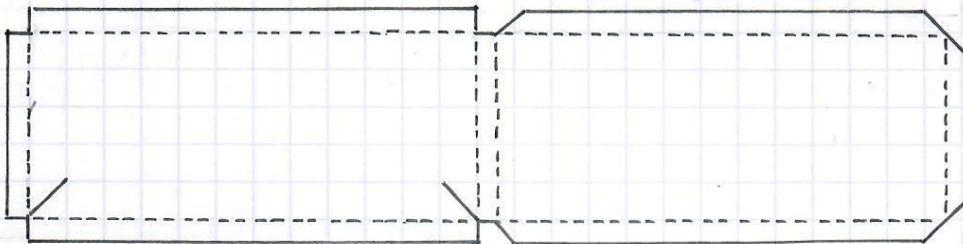
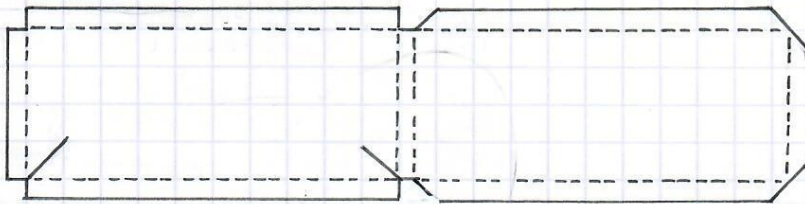
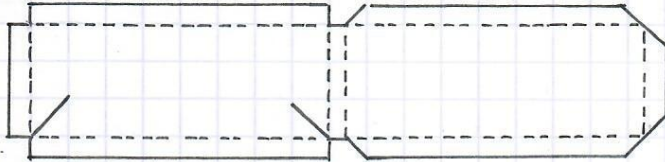
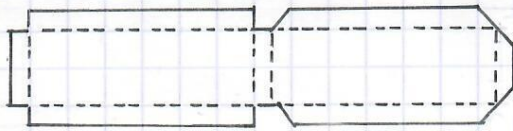
LA COUR CENTRALE

Photocopier sur papier bristol uni (205 g)



- ↑
- Percer : ce sera la place des sapins

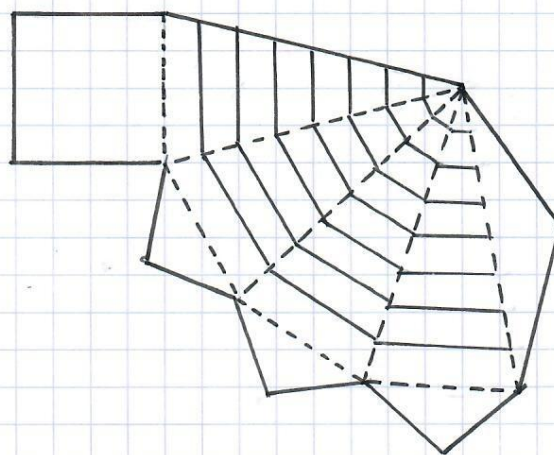
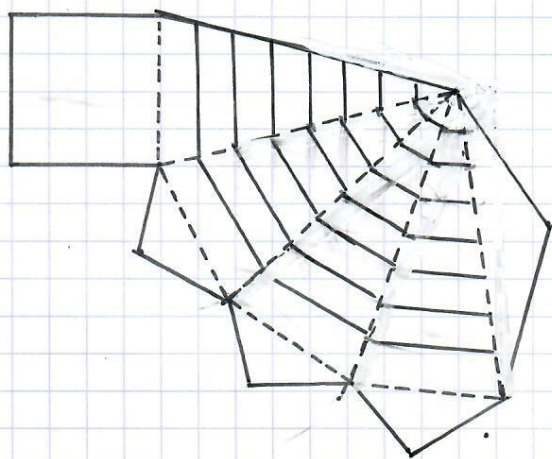
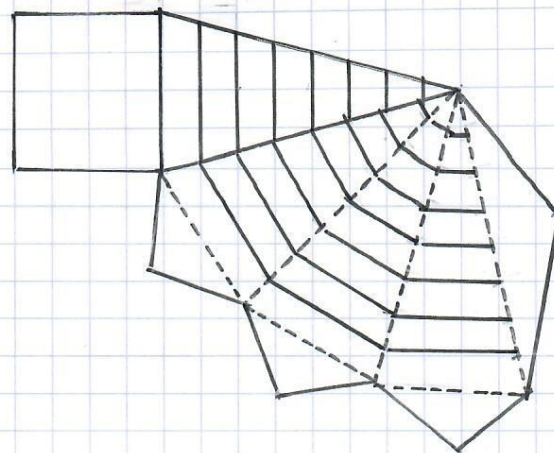
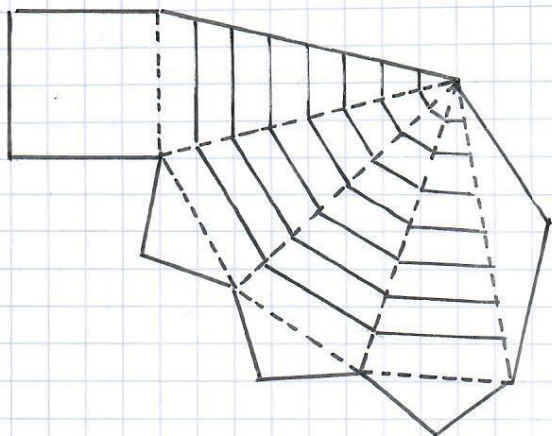




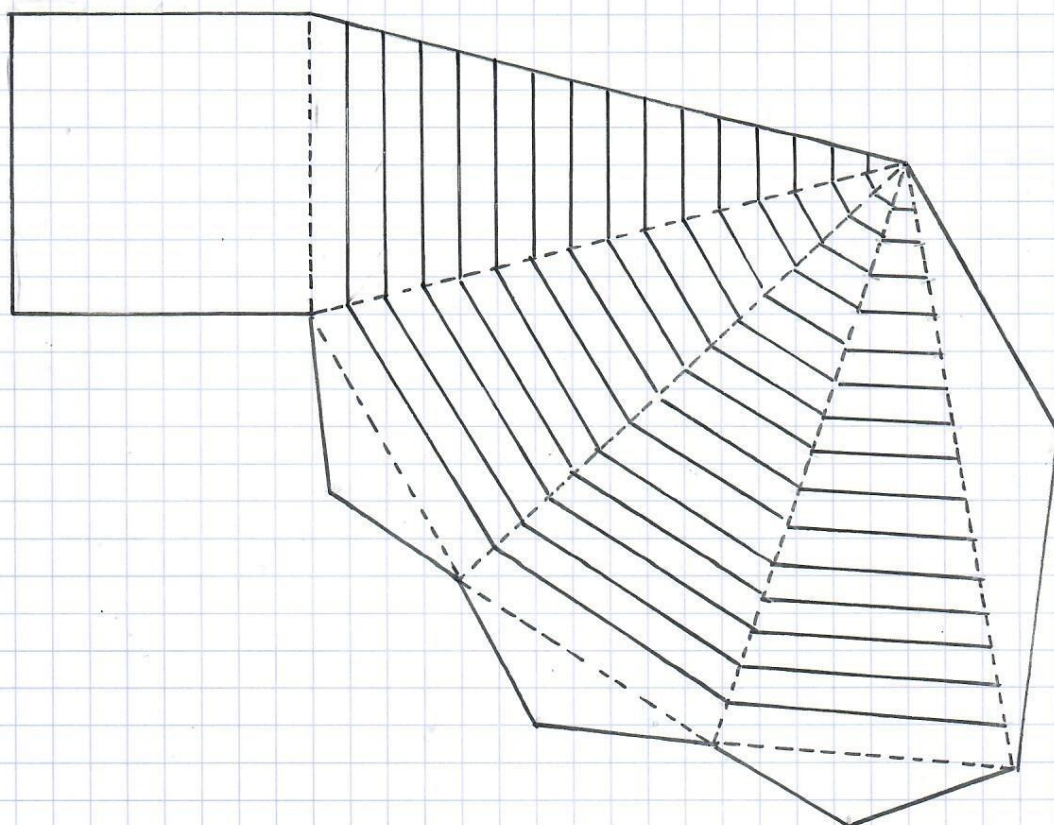
Pour obtenir un escalier, il suffit d'empiler les 4 parallélépipèdes.

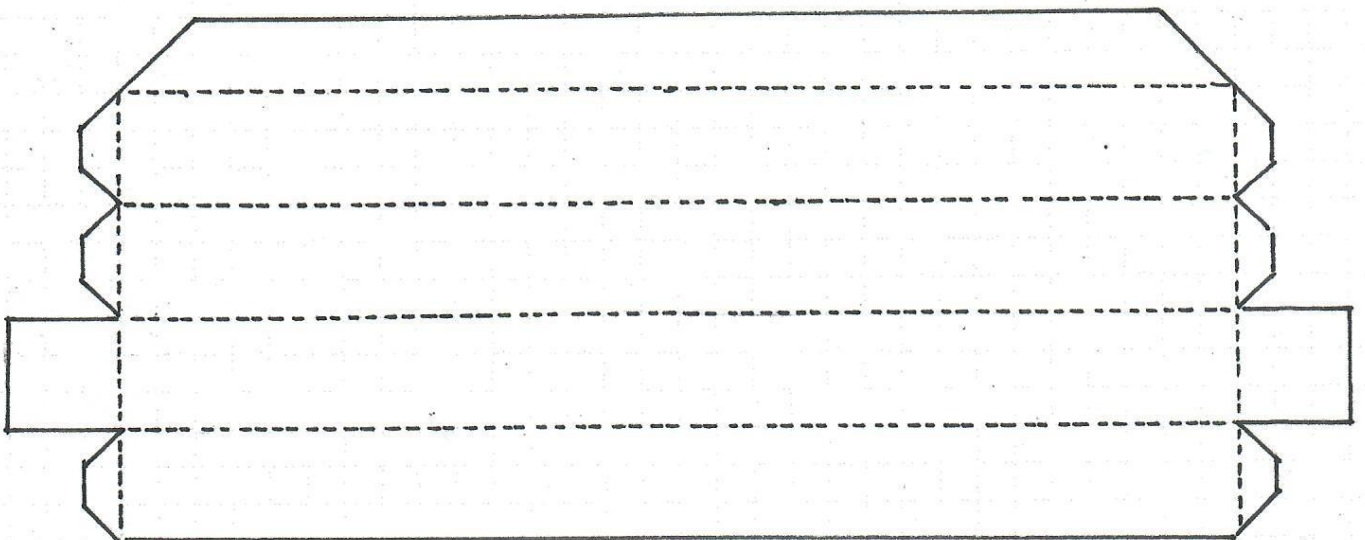
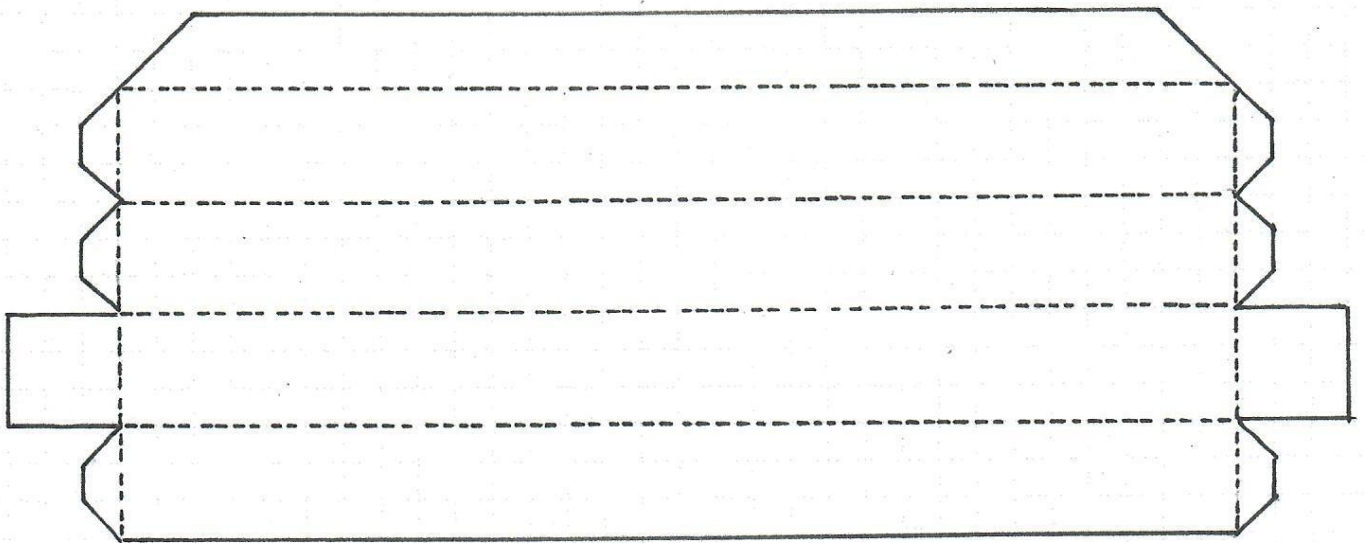
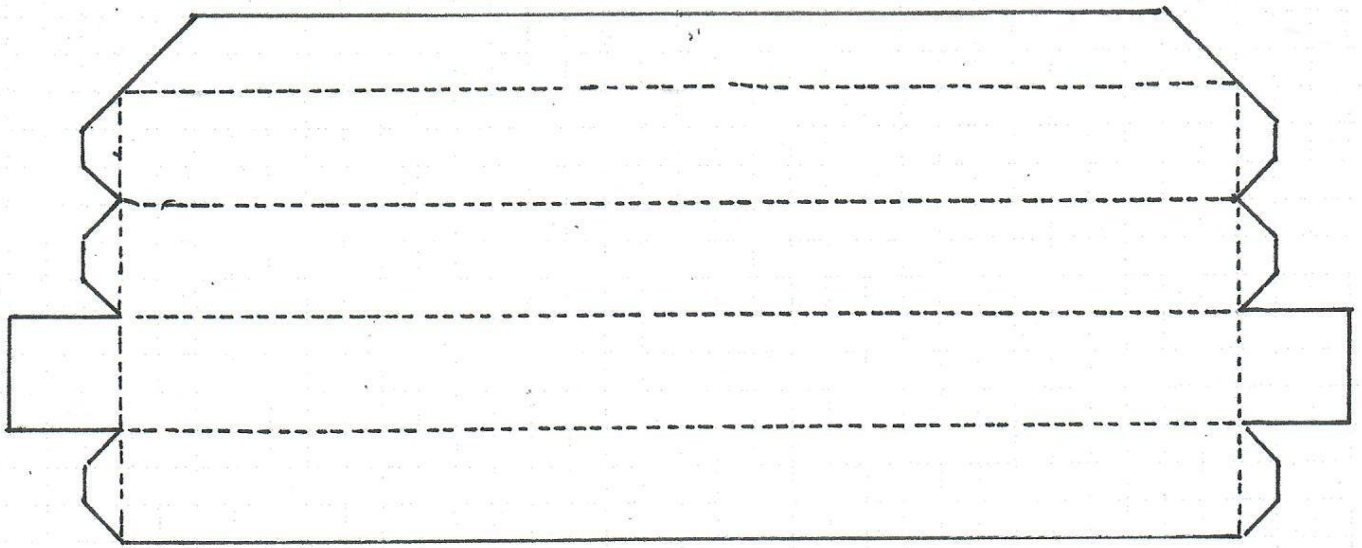
3 escaliers trouveront leur place dans la cour centrale, le 4^{ème} sera pour la terrasse (côté sud).





**LES SAPINS TAILLES POUR LA COUR
CENTRALE : fixés grâce à des cure dents.**





Rambardes à coller dos à dos

